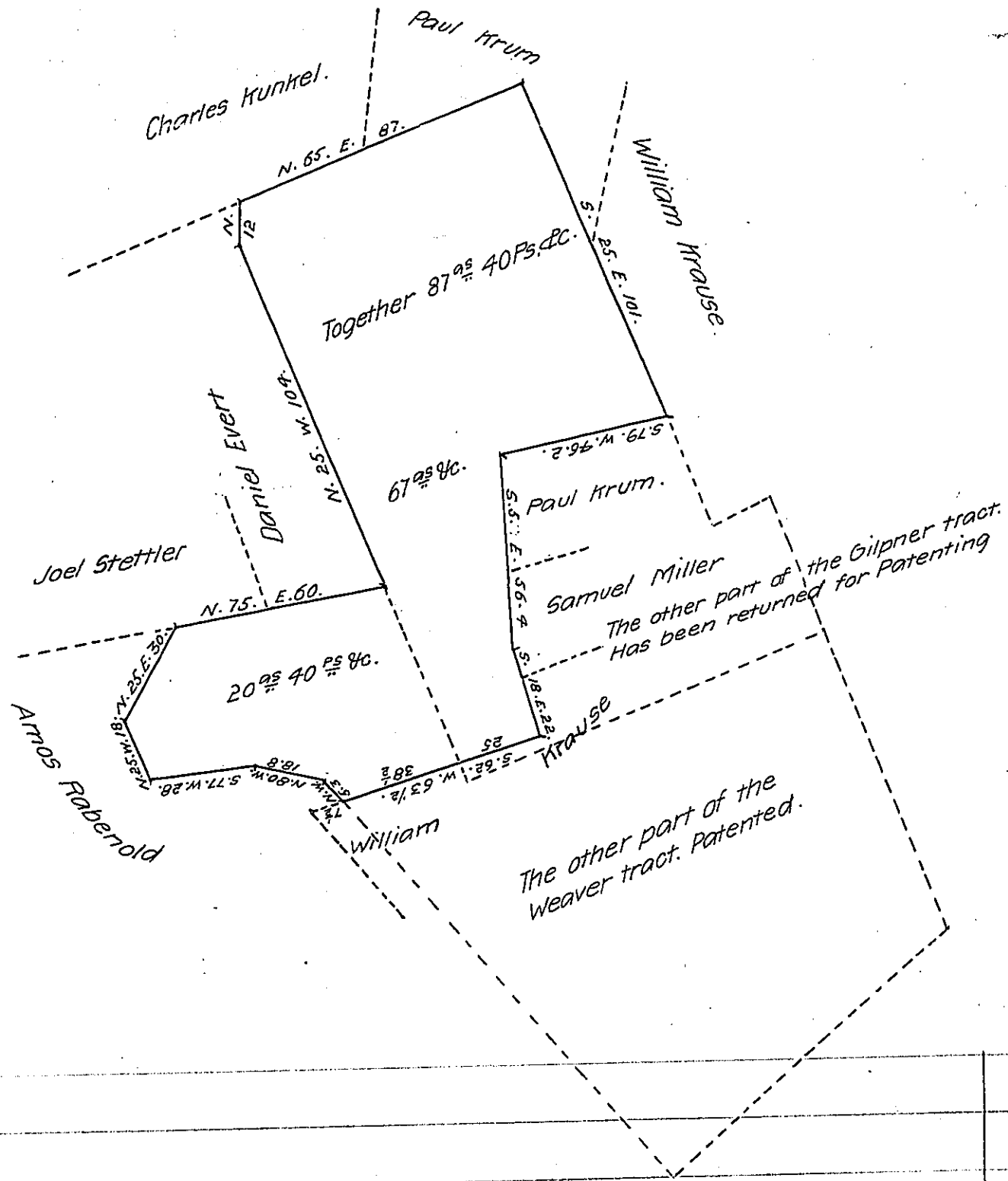


FORM NO. 1.



Draft of a tract of land situate in Heidelberg township Lehigh County, containing 87 ⁹/₁₆ 40 ^{ps} and allowance of six per cent for roads &c. surveyed for Paul Krum, W^m Krause, Daniel Evert, and Armas Rabenold the 6th day of Augt. A. D. 1873. 67 ⁹/₁₆ & allowance thereof being part of 97 ⁹/₁₆ 150 ^{ps} and allowance originally surveyed to Francis Gilpner in pursuance of Warrant dated 28 Nov. A. D. 1743 and 20 ⁹/₁₆ 40 ^{ps} &c. being part of 103 ⁹/₁₆ 45 ^{ps} & allowance surveyed by Warrant dated 22 Sept. A. D. 1748 to John Weaver, The above being the unpatented balance of both tracts and to be embraced in One patent.

Geo. Blank. C. S.

To R. B. Beath. Esq.
Surveyor General.

IN TESTIMONY that the above is a copy of the original remaining on file in the Department of Internal Affairs of Pennsylvania, made conformably to an Act of Assembly approved the 16th day of February 1833, I have hereunto set my hand and caused the Seal of said Department to be affixed at Harrisburg, this twenty sixth day of June 1907.

Henry Houck
Secretary of Internal Affairs.